

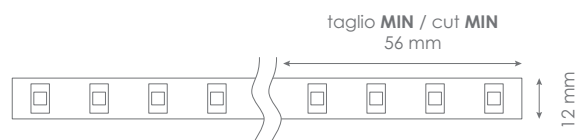
FLEX - PLUS 5000-4000

Led Strip



Alimentazione / Operating Voltage	24 V
Potenza / Power	22 W/mt
Larghezza Pcb / Width Pcb	12 mm
Altezza / Height Stripe	2 mm
Lunghezza / Length Stripe	5000 mm
Taglio segmento/ Length per Cut	56 mm
N° LED	144 / mt
IP	20
Temperatura esercizio Storage Temperature	- 30° C - + 70°C
Lifetime	L70B20 50000H

	Flusso Luminoso Luminous Flux	Efficienza Efficiency	Colore Luce Led Color
DA-PLUS-5000-4000	4754 lm/mt	135 lm/W	4000 K



Via Cadorna, 40/42
20032 Cormano (MI)
Tel. +39 02 84269630
Fax +39 02 84269631
info@dadalighting.com
www.dadalighting.com

FLEX - PLUS 5000-4000

Led Strip

Light efficiency:

190 Lumen/Watt

Output: 4754 lm

Light quality:

CRI: 81,2

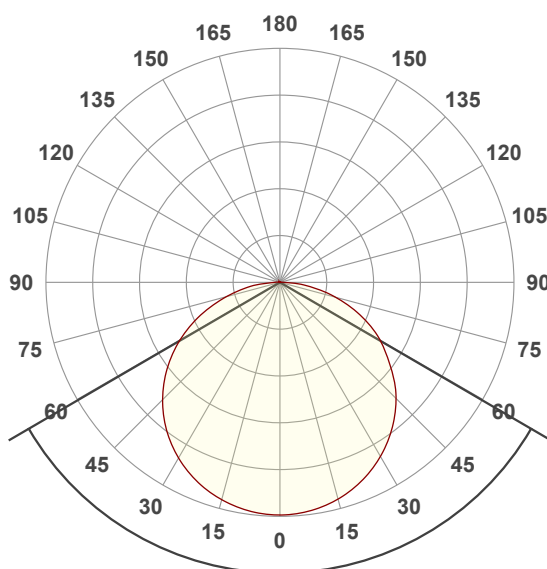
Peak: 1515 cd

Color temperature:

4000 K

Power: 25,0 W

24,0V @ 1,04A



Beam angle

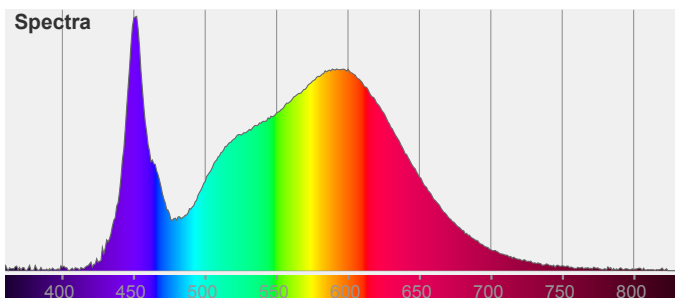
119,5°

Color



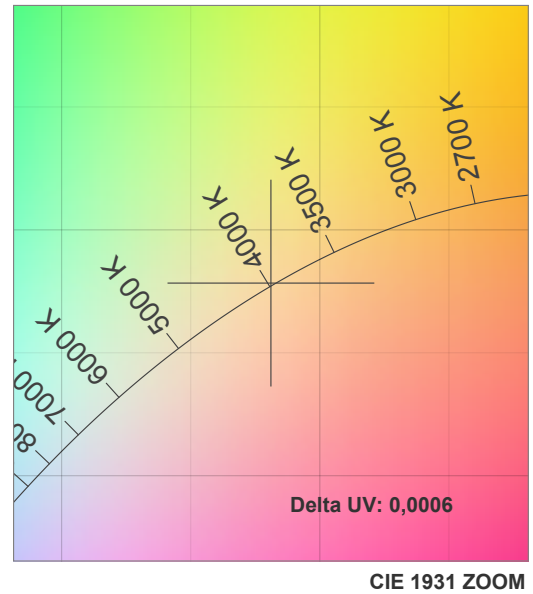
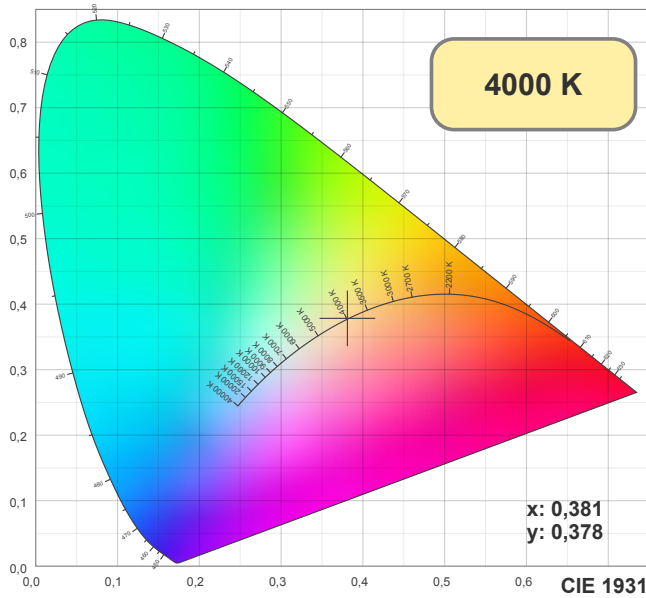
CIE1931
x: 0,381
y: 0,378

Spectra

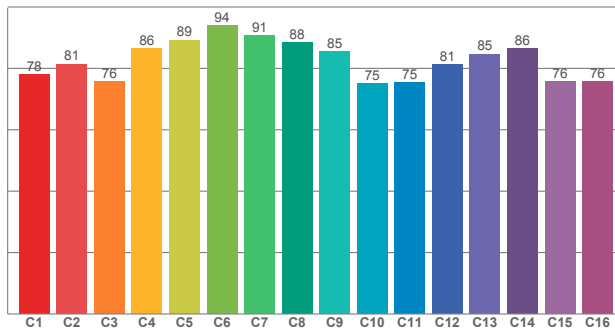


FLEX - PLUS 5000-4000

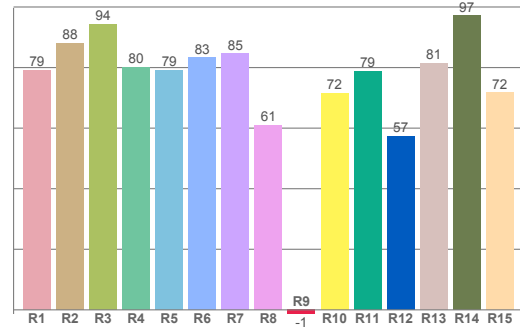
Led Strip



TM30: 82,5



CRI: 81,2 (R1-R8)



CRI R values, only R1-R8 are used to calculate final CRI value

R1	R2	R3	R4	R5	R6	R7	R8	R9	R10	R11	R12	R13	R14	R15
79,20	88,01	94,44	80,07	79,16	83,21	84,67	60,99	-1,36	71,64	78,89	57,44	81,45	97,16	71,72

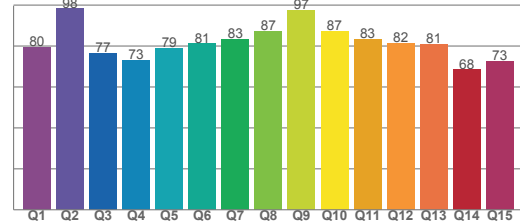
TM30 C values, 16 binned values out of total of 99 C values

C1	C2	C3	C4	C5	C6	C7	C8	C9	C10	C11	C12	C13	C14	C15	C16
78,01	81,37	75,64	86,45	89,13	93,88	90,73	88,39	85,37	74,97	75,43	81,14	84,64	86,49	75,73	75,58

CQS Q values

Q1	Q2	Q3	Q4	Q5	Q6	Q7	Q8	Q9	Q10	Q11	Q12	Q13	Q14	Q15
79,50	98,27	76,66	73,10	78,90	81,14	83,21	87,30	97,36	87,29	83,31	81,58	81,00	68,46	72,51

CQS: 80,3

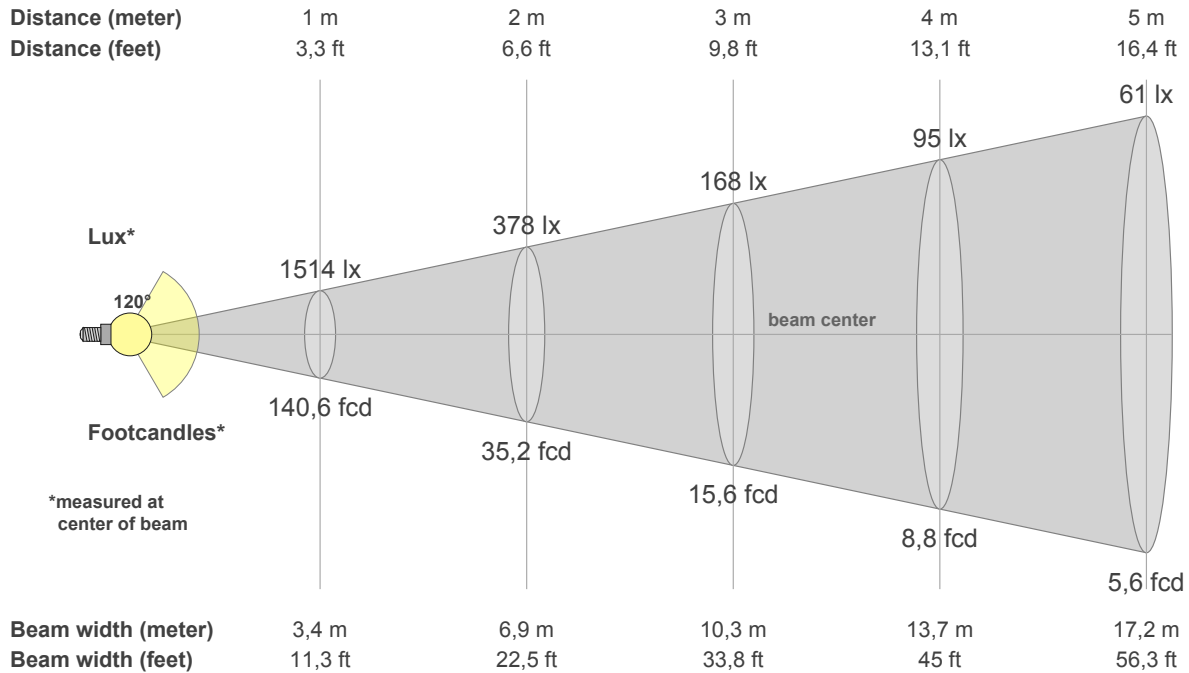


Color parameters

CCT	CRI	CRI R9	TM30 Rf	TM30 Rg	CQS	x	y	u	v	Duv
4000 K	81,2	-1,4	82,5	94,8	80,3	0,4	0,4	0,2	0,3	0,0006

FLEX - PLUS 5000-4000

Led Strip



Intensities in 0° c-plane

0°	5°	10°	15°	20°	25°	30°	35°	40°	45°	50°	55°	60°	65°	70°	75°	80°	85°	90°	95°
1514	1506	1489	1460	1419	1369	1308	1236	1157	1068	964	857	753	633	507	376	251	135	44	12
100%	99%	98%	96%	94%	90%	86%	82%	76%	71%	64%	57%	50%	42%	34%	25%	17%	9%	3%	1%

Intensities in 0° c-plane

0°	5°	10°	15°	20°	25°	30°	35°	40°	45°	50°	55°	60°	65°	70°	75°	80°	85°	90°	95°
1514	1506	1489	1460	1419	1369	1308	1236	1157	1068	964	857	753	633	507	376	251	135	44	12
100%	99%	98%	96%	94%	90%	86%	82%	76%	71%	64%	57%	50%	42%	34%	25%	17%	9%	3%	1%

Intensities in 180° c-plane

0°	5°	10°	15°	20°	25°	30°	35°	40°	45°	50°	55°	60°	65°	70°	75°	80°	85°	90°	95°
1514	1509	1490	1464	1427	1377	1320	1250	1169	1080	979	868	752	625	494	364	247	133	36	10
100%	100%	98%	97%	94%	91%	87%	83%	77%	71%	65%	57%	50%	41%	33%	24%	16%	9%	2%	1%

Intensities in 180° c-plane

0°	5°	10°	15°	20°	25°	30°	35°	40°	45°	50°	55°	60°	65°	70°	75°	80°	85°	90°	95°
1514	1509	1490	1464	1427	1377	1320	1250	1169	1080	979	868	752	625	494	364	247	133	36	10
100%	100%	98%	97%	94%	91%	87%	83%	77%	71%	65%	57%	50%	41%	33%	24%	16%	9%	2%	1%

Beam angle 50%	Field angle 10%	Cutoff angle 2,5%	Intensity ratio in 120° cone	Intensity ratio in 90° cone
119,5°	168,2°	180,0°	75,0%	50,1%